



we are.



RELIABLE
AUTOTECH PVT LTD

CORPORATE PRESENTATION

www.ReliableAutotech.com



RELIABLE





ABOUT US



we
40

Years Of Legacy

61

Million USD Turnover / **30%**
Exports

15+

Global Customers

7+

Countries Served

6

No of Segments Served

8 Plants

Operations spread across in India

1500+

Total Workforce

Warehouses in USA
& Europe

In House Die Shop /
Tool Room &
Development Centre



OUR HISTORY

1984

Reliable Engineers was founded by Devendra Bapat, Amol Chitnis & Rajendra Bagwe

1997

1st Manufacturing Plant for Auto components setup at Nashik

2002

1st Export order received from Emerson (Fischer Vavles, USA)

2007

- Reliable Techno Design Pvt. Ltd. was incorporated for Die Shop & Design Centre
- 3rd Manufacturing Plant setup at Chakan

2014

Greenfield Plant established at Sanand, Gujarat

2017

- Foray into the Defence Sector
- Achieved IATF 16949 certification

2020

- Govt. of India recognition (DSIR) for R&D Centres at Nashik & Pune
- Foray into the Material Handling Sector

2023

- Started a new plant at Vasuli, Pune
- Achieved ISO 27001 certification
- Achieved 2 Star Export House Status
- Won the TATA Steelium Manufacturing Excellence Award



1996

Reliable Autotech Pvt. Ltd. (RAPL) was incorporated

1999

Foray into the Farm Equipment Sector

2003

2nd Manufacturing Plant - Export Oriented Unit (EOU) setup at Nashik

2012

"Partner" status conferred by John Deere

2015

- Assembly Plant established at Chenoa, USA
- Development Centre established at Nashik

2018

Satellite Plants started at Pithampur, Indore & Nighoje, Pune

2022

- Achieved EN15085 & ISO 3834 Welding certification
- Foray into the Railways Sector
- Established a dedicated High Precision Machining Centre at Chakan
- Launched the First Annual Sustainability Report voluntarily

2024

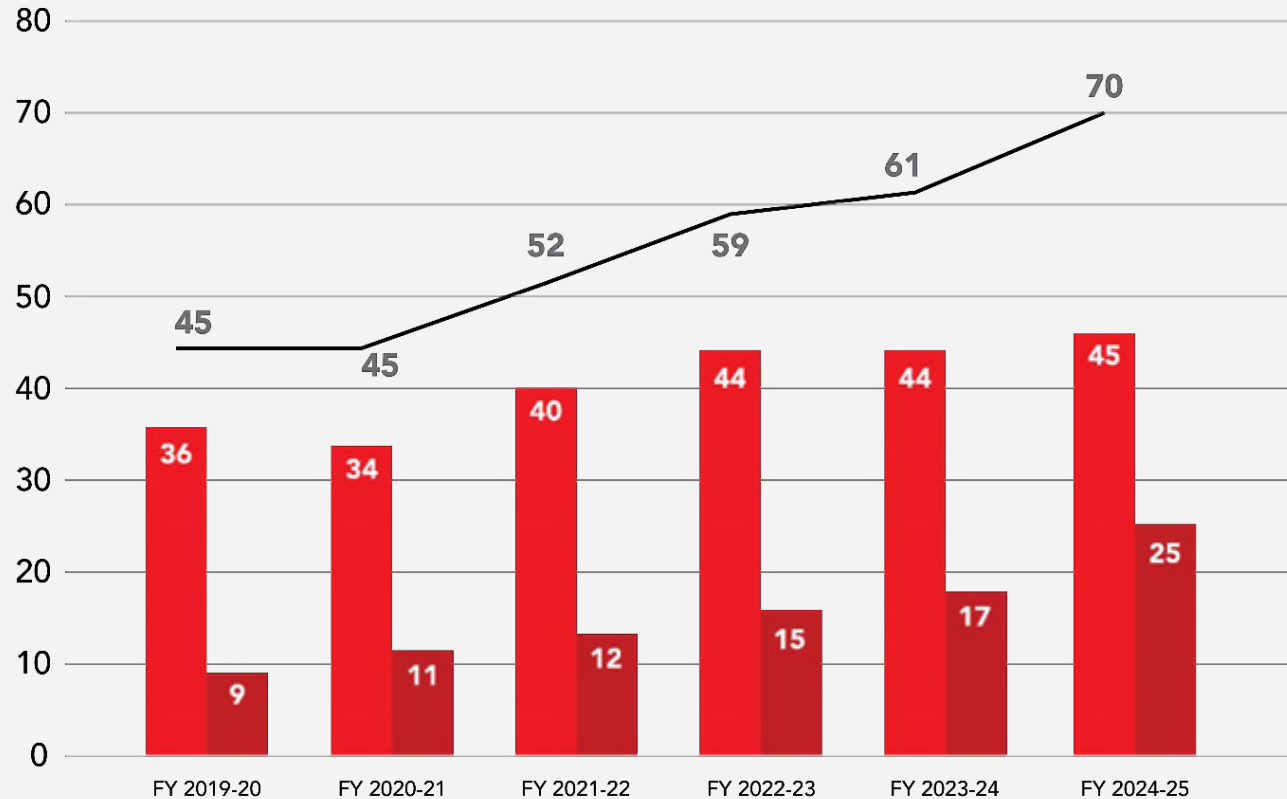
- Upcoming Plant Dewas
- Upcoming Plant in Kurli, Pune





OUR GROWTH

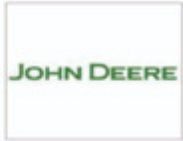
Sales Million - USD
Projected FY 24-25



-  Domestic
-  Export
-  Total



▶ OUR GLOBAL REACH





OUR MANUFACTURING FOOTPRINT

We have established 8 plants across the country equipped with the latest technology & infrastructure to meet international quality standards of sheet metal components, critical welded assemblies and dies & fixtures.





▶ NASHIK LOCATION - PARTS MANUFACTURING



Manufacturing Plant 1 - Nashik



75000 Sq.ft.



301



200T - 800T



Dedicated Assembly Line & Paint Shop for Axle Beams



Manufacturing Plant 2 - Nashik



25000 Sq.ft.



198



80T - 250T



Robotic Welding Facility





▶ CHAKAN / DEWAS LOCATION - PARTS MANUFACTURING



Dedicated Assembly Lines for
Housing Rings, Bowl Covers,
Engine Plates,
Heavy Fabrication & Machining



50000 Sq.ft.



150

Manufacturing Plant 2 - Vasuli, Pune



Manufacturing Plant 3 - Dewas, Madhya Pradesh



27000 Sq.ft.



82



Robotic Welding
Facility



Manufacturing Plant 1 - Chakan, Pune



350000 Sq.ft.



402



80T - 1250T



Robotic welding facility & Dedicated
critical machining setup





▶ NASHIK / CHAKAN LOCATION - TOOLS MANUFACTURING



Development Centre, Nashik



10000 Sq.ft.



143



Machining &
Tryout Press



Small dies, Welding
fixture, Automation, Rapid
proto type building



Dedicated Design Office



Die Shop, Chakan, Pune



195



CMM, VMCs, Die Spotting &
Tryout Press



Casting dies



- a. Dedicated Design Office
- b. Advanced Simulation & Process Feasibility



CHAKAN LOCATION - DEFENCE & HEAVY FABRICATION



Manufacturing Plant - Defence, Pune



25000 Sq.ft.



150



Expertise in specialized
steel welding



EN15085 / ISO3834 Certification

Expertise in specialized steel welding

- Carbon steel with grades : SA516.IS2062
- Stainless steel with grades : SS304, SS 316, SS316L
- Special Steel : DMR 249A, Weldom, Strenex, S690QL, 17 - 4PH
- Aluminum grades : 6061 T6
- Welding technology expert with IWE (International Welding Engineer) certified
- CSWIP certified experts
- Machining technology expert



▶ BUSINESS SEGMENTS



Automotive

**Agriculture
&
Turf Care**



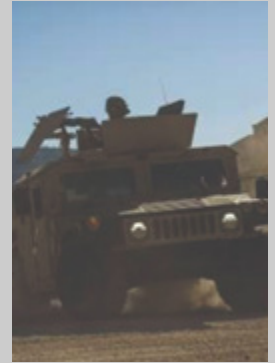
**Commercial
Vehicles**

**Construction
Equipment**



**Material
Handling**

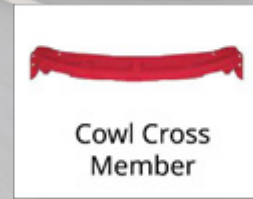
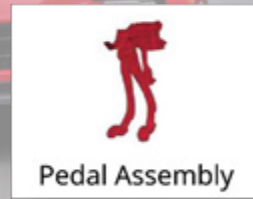
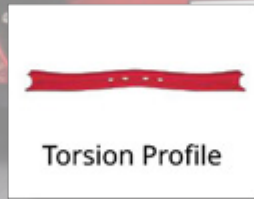
Defence



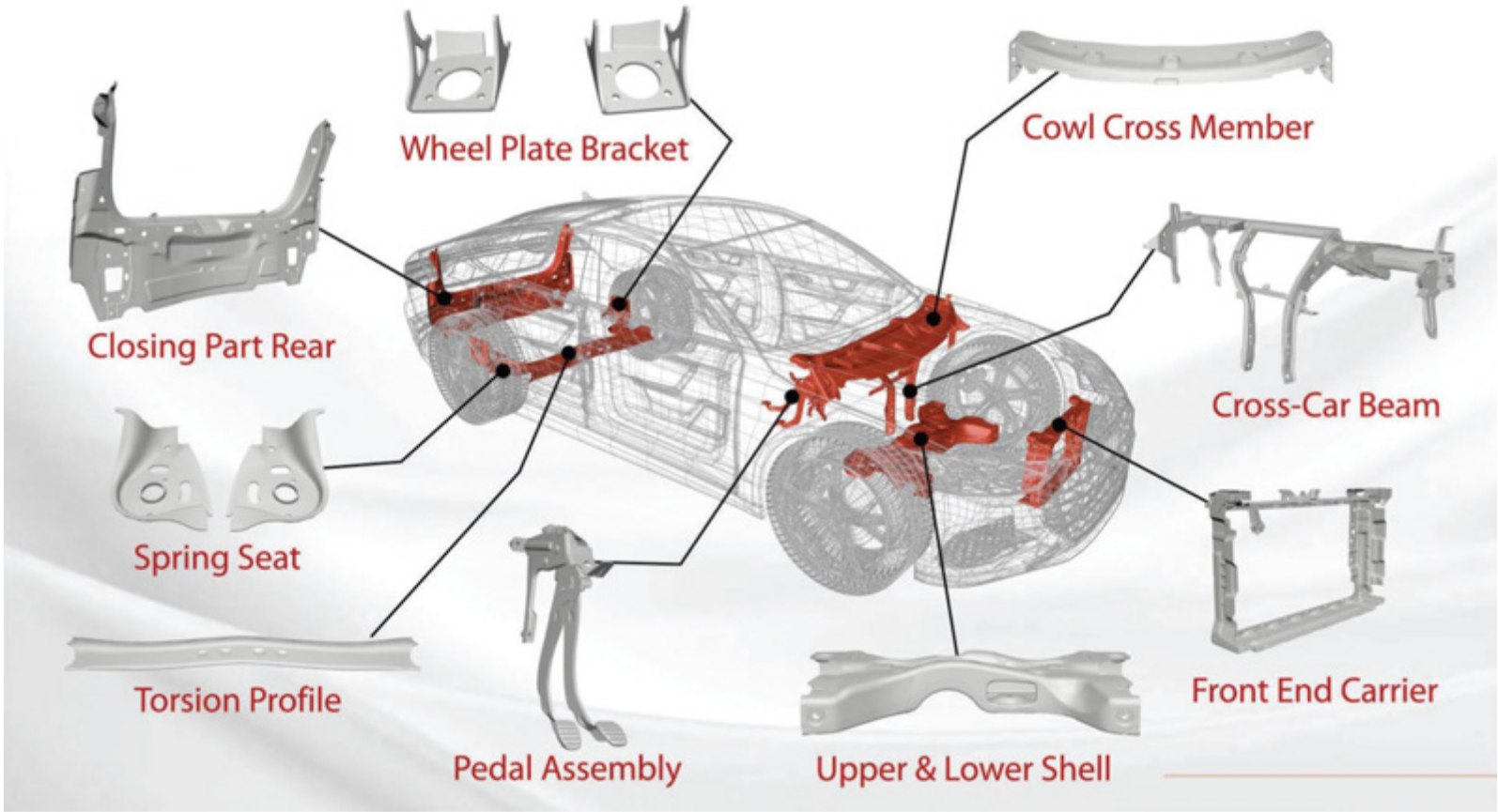


▶ PRODUCT PORTFOLIO

AUTOMOTIVE SEGMENT



▶ EXPLODED VIEW - AUTOMOBILE



▶ PRODUCT PORTFOLIO



AGRICULTURE & TURF CARE



Beam Axle



Engine Frame



Cowl & Hood
Assembly



Front Plate



Pedal Assembly



Hitch / Quick
Coupler

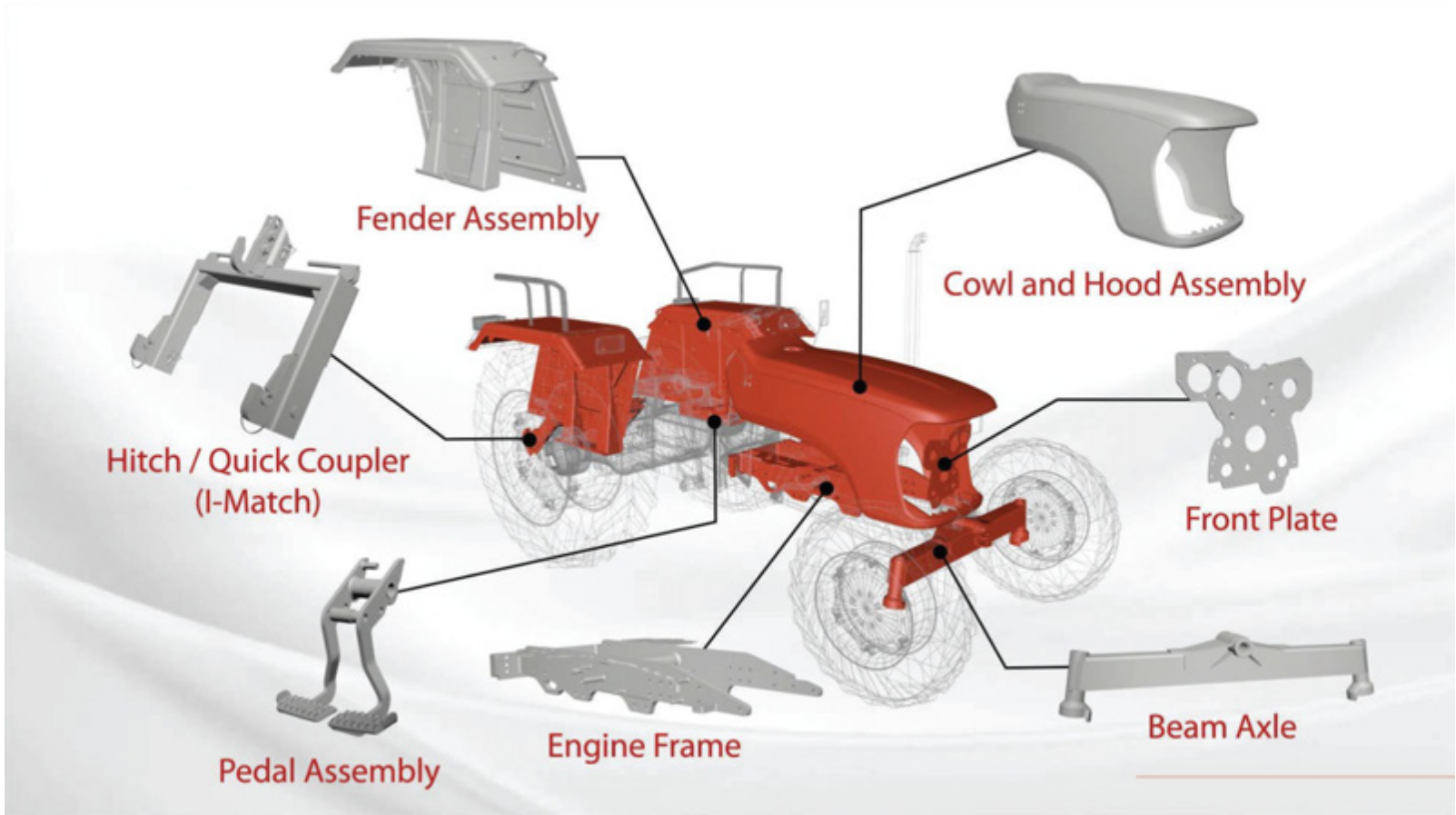


Fender Assembly



Fender

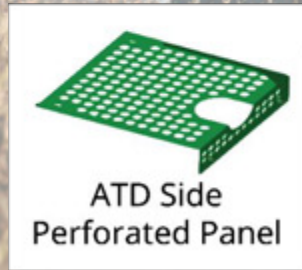
▶ EXPLODED VIEW - AGRICULTURE





▶ PRODUCT PORTFOLIO

AGRICULTURE-HARVESTER





▶ PRODUCT PORTFOLIO

CONSTRUCTION EQUIPMENTS



Base Plate Rise



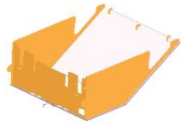
Pedal Assembly



Foot Step



Frame ,
Bogie Assembly



Tank Guard
Weldment



Bracket Front
Light



▶ PRODUCT PORTFOLIO

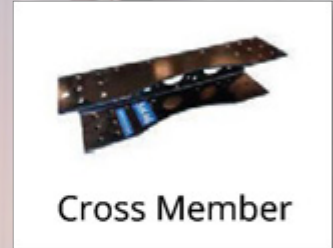
COMMERCIAL VEHICLES



Bowl Cover



Housing Ring



Cross Member



Support Shock Mount



Outrigger Front



▶ PRODUCT PORTFOLIO

MATERIAL HANDLING EQUIPMENTS



Side Panel



Steer Axle Mount
Bracket



Floor Plate



▶ PRODUCT PORTFOLIO

DEFENCE



Precision Machined
Components



Hinge Bracket



Conveyor Cage



Barrel Component



Integrated Mechanical
System



▶ OUR MANUFACTURING FACILITIES



At Reliable, it is our ethos to always embrace new technologies. Our technology is our strength for world-class manufacturing quality.

**Tandem Press Lines
from 80T to 200T**

**Transfer Press-1250T,
Progressive press-630T**

Robotic Welding Lines

**Sophisticated Machining
Centers**

**In-house Primer Paint Shop
& Dedicated Source For
Surface Coating**



▶ OUR MANUFACTURING FACILITIES



Press Line - Small Tonnage



Press Line - High Tonnage





▶ OUR MANUFACTURING FACILITIES



Laser Machine Specs

Make :- Trumpf
Machine Power:- 6KW
Sheet size:- 1500X3000mm
Cutting thickness:- upto 25mm
Power Source:- Fibre Optic
Cutting gas provision:- Oxygen and Nitrogen



Bending Machine Specs

Make :- Trumpf
Bending Length :- 3m max
Tonnage Capacity:- 150T



Robotic Welding Lines

Make :- ABB, OTC, KUKA

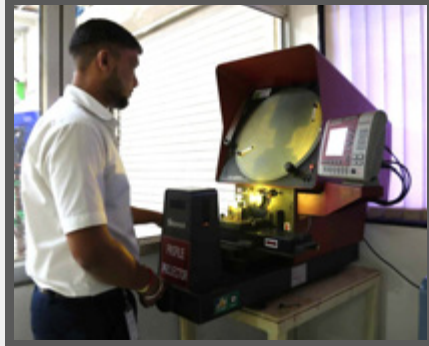




INSPECTION, MEASUREMENT & TESTING EQUIPMENTS



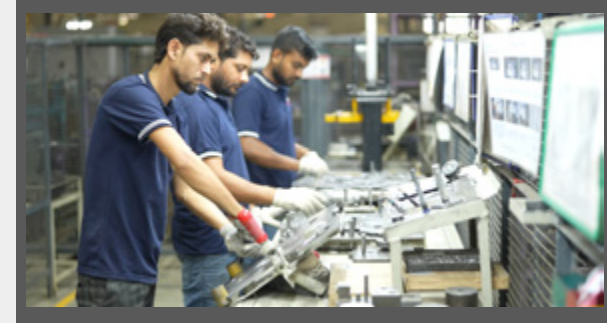
Salt Spray Test



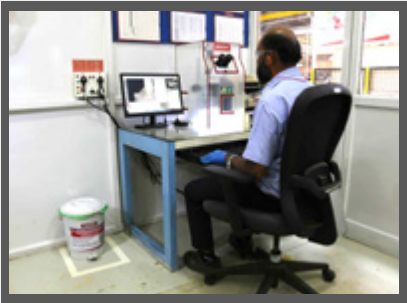
Profile Projector



CMM



Engine Plate Testing Setup



Microscope



Mold & Polishing



**Laser Engraving
for Bowl Cover**



SERVICE QUALITY & CERTIFICATION



**ISO
9001:2015**

Quality Management
System



**IATF
16949:2016**

Quality Management
System for Automotive
Sector



**ISO
14001:2015**

Environment
Management System



**ISO
45001:2018**

Occupational Health &
Safety Management
Systems



**ISO
3834:2021**

Quality Requirements
for Fusion Welding



**EN
15085:2020**

Welding of Railway Vehicle
Sand Components
according to EN 15085 - 2020



**ISO / IEC
27001: 2022**

Certified Information
Security Management
System





OUR STRENGTHS

Sustainability

Passed Scania (SAQ Platform) & John Deere (Ecovadis Platform)

Robust System

- Business Excellence
- SAP HANA
- Single Piece Flow
- Cellular Manufacturing
- Practicing TPM, Kanban, Most

Material

- Monthly Buying of more than 3000 T raw material (1 - 20 mm)
- CR/HR/ Coated and High Strength Material
- Carbon, Alloy & Military grade special steel

Development Centre

- Speedy Development of Proto Parts & Initial Build Samples
- In-house design and manufacturing of Welding/ Assembly Fixtures

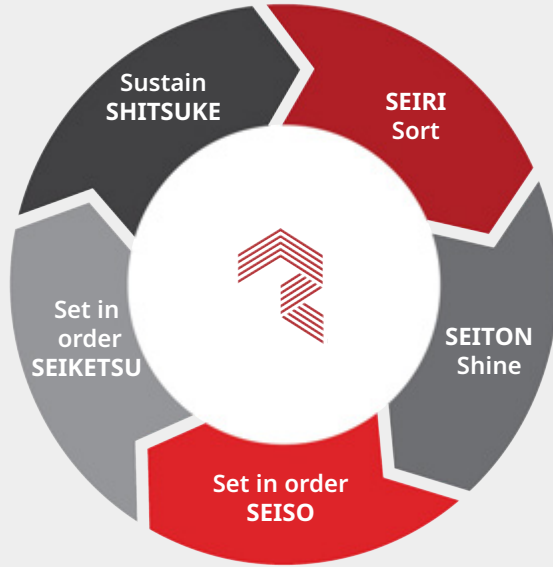
Tool Room

- State Of The Art Facility
- Dedicated Design team of 40+ Engineers
- Use latest softwares- Catia V5, Siemens Nx, Pro-E, Inventor, Think3, Hyper Mesh, LS-Dyna and Radios

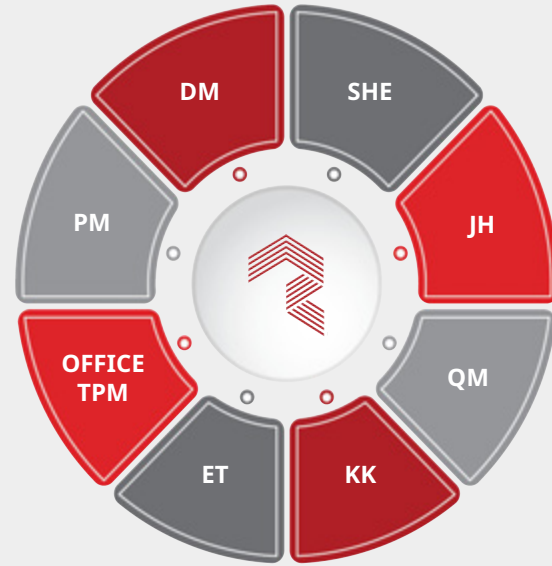




BUSINESS EXCELLENCE



5S



Total Productive Maintenance



SUPPLY CHAIN & WAREHOUSING

▶ **Robust system** to manage the entire supply chain

▶ Shipping **400+ containers** per year

▶ Warehouses located across the globe at
USA (South Carolina & IOWA)
Europe (France)





EMPLOYEE ENGAGEMENT & TRAINING PROGRAMS





▶ SOCIAL RESPONSIBILITY

CSR Initiatives

- Partnering with NGOs & Institutions working in the field of Healthcare, Child Education, Social Security, Environment, Road Safety & Cleanliness.
- 100% Transparency & Compliance related to CSR contributions.
- Aim to formalize CSR Strategy with monitoring & impact assessment by 2025.
- Active Employee participation & volunteerism in a local NGO working for differently abled women.



SUSTAINABILITY

- Published First Annual Sustainability Report for FY 21-22 based on GRI Standards. (Available on www.reliableautotech.com/investors).
- Action plan & strategy in place to reduce carbon footprint in the supply chain.
- Monthly Monitoring & Review of Annual Sustainability Goals
- ~700 Kw Rooftop Solar installed.
- Plan to achieve 100% Green energy for all Plants by 2025.





SUSTAINABILITY HIGHLIGHTS



People



No. of hours of functional & general training to staff – **29** hrs per employee



No. of NGOs to with whom we partner - **10**



Zero major accidents/ fatalities status

Planet



No. of trees planted & sustained till date – **842**



Energy saving - **200000** KWH by process efficiency and improvements



Zero Hazardous waste to landfill

Prosperity



Electricity generated from solar in **FY 22-23** in Kwh – **11%**



Electricity generated from solar in **FY 22-23** in GJ – **1843**



CSR contribution for **FY 22-23** – INR **3.1** million

SUSTAINABILITY HIGHLIGHTS



Reliable has been an early adopter of Corporate Social Responsibility initiatives. Reliable is dedicated to protecting human health, natural resources and the global environment. Our CSR initiatives are aimed at giving back to our stakeholders at large by supporting worthy causes through financial assistance and employee volunteerism. Our CSR Team and a few staff members visit a welfare institution for mentally challenged/ differently abled women every month to personally delivery groceries & supplies. We also encourage a couple of new staff members every month to accompany the CSR Team. This helps the staff members to nurture a sense of purpose & responsibility towards the society.

We focus on supporting Organisations who work for the following causes: Healthcare, Child Education, Social Security, Environment, Road Safety and Cleanliness. 100 % Transparency 100 % Compliance To know more about our various CSR & volunteering initiatives, please visit <https://www.reliableautotech.com/csr>. Our commitment towards environmental & societal welfare is unwavering and we firmly believe in creating a long-term positive impact. We intend to maximize the impact of our contributions under Corporate Social Responsibility by adopting a structured approach & strategy:



REWARDS & RECOGNITION

- Development Centres certified as R&D centres by Department of Scientific & Industrial Research, Government of India.
- Silver medal for National award manufacturing competitiveness (NAMC) by International research institute for manufacturing (IRIM).
- 18th Edition CII Western Region SHE Excellence & Innovation Awards 2023.
- Special recognition by TATA Steel.
- 1st Prize in HR Best Practices by Vibrant HR.
- National Convention on Quality Concepts “NCQC 2024” at Nagpur award.
- Award from 23rd QCFI Annual Chapter Convention on Quality Concepts “CCQC 2023” by Quality Circle Forum of Indian award.
- 2 Star Export House Status Holder.



RELIABLE LEADERSHIP TEAM



we are.



RELIABLE

we are.

Thank You!

Connect with us:

mktg@reliableautotech.com

Website Link:

<https://www.reliableautotech.com/>

LinkedIn:



www.ReliableAutotech.com