



we are.



**RELIABLE**  
AUTOTECH PVT LTD

CORPORATE PRESENTATION

[www.ReliableAutotech.com](http://www.ReliableAutotech.com)

**RELIABLE**





# ABOUT US



we  
40

Years Of Legacy

**61**

Million USD Turnover / **30%**  
Exports

**15+**

Global Customers

**7+**

Countries Served

**6**

No of Segments Served

**8 Plants**

Operations spread across in India

**1500+**

Total Workforce

Warehouses in USA  
& Europe

In House Die Shop /  
Tool Room &  
Development Centre



# OUR HISTORY

**1984**

Reliable Engineers was founded by Devendra Bapat, Amol Chitnis & Rajendra Bagwe

**1997**

1st Manufacturing Plant for Auto components setup at Nashik

**2002**

1st Export order received from Emerson (Fischer Vavles, USA)

**2007**

- Reliable Techno Design Pvt. Ltd. was incorporated for Die Shop & Design Centre
- 3rd Manufacturing Plant setup at Chakan

**2014**

Greenfield Plant established at Sanand, Gujarat

**2017**

- Foray into the Defence Sector
- Achieved IATF 16949 certification

**2020**

- Govt. of India recognition (DSIR) for R&D Centres at Nashik & Pune
- Foray into the Material Handling Sector

**2023**

- Started a new plant at Vasuli, Pune
- Achieved ISO 27001 certification
- Achieved 2 Star Export House Status
- Won the TATA Steelium Manufacturing Excellence Award



**1996**

Reliable Autotech Pvt. Ltd. (RAPL) was incorporated

**1999**

Foray into the Farm Equipment Sector

**2003**

2nd Manufacturing Plant - Export Oriented Unit (EOU) setup at Nashik

**2012**

"Partner" status conferred by John Deere

**2015**

- Assembly Plant established at Chenoa, USA
- Development Centre established at Nashik

**2018**

Satellite Plants started at Pithampur, Indore & Nighoje, Pune

**2022**

- Achieved EN15085 & ISO 3834 Welding certification
- Foray into the Railways Sector
- Established a dedicated High Precision Machining Centre at Chakan
- Launched the First Annual Sustainability Report voluntarily

**2024**

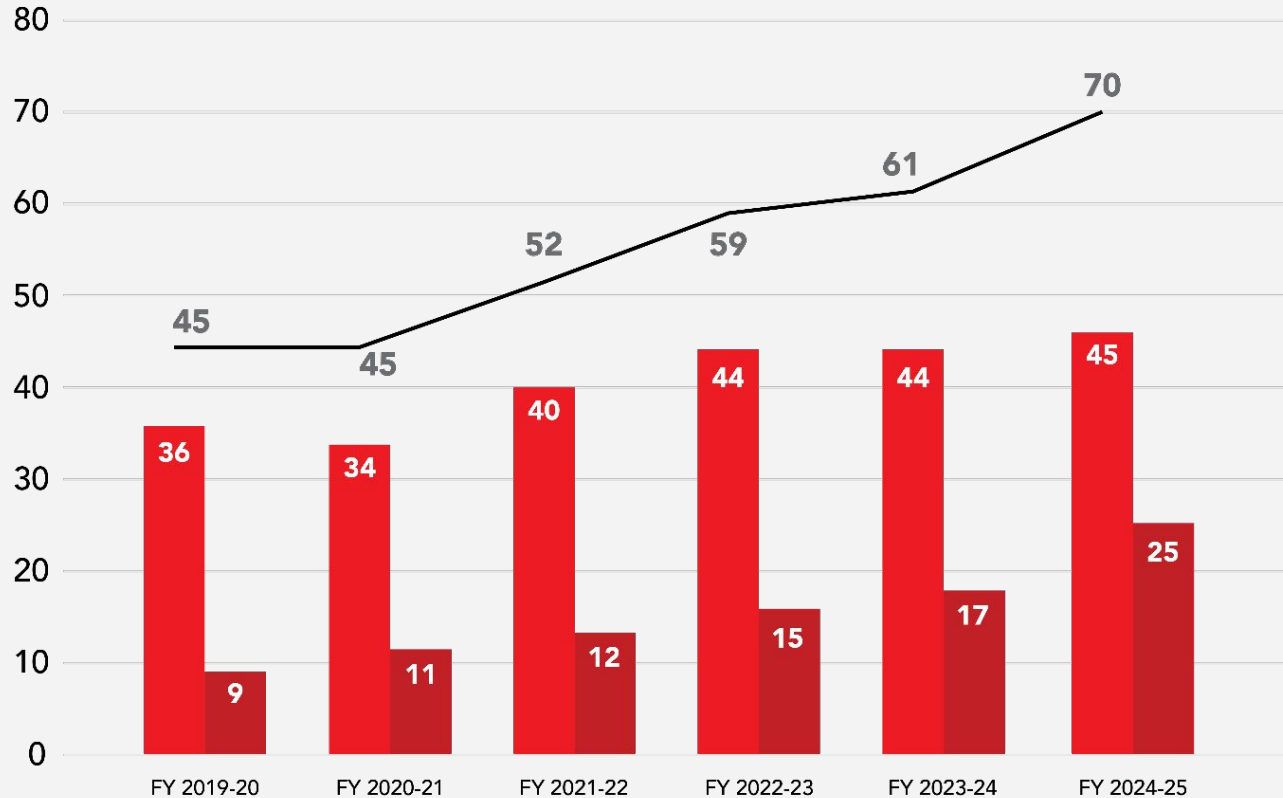
- Upcoming Plant Dewas
- Upcoming Plant in Kurli, Pune





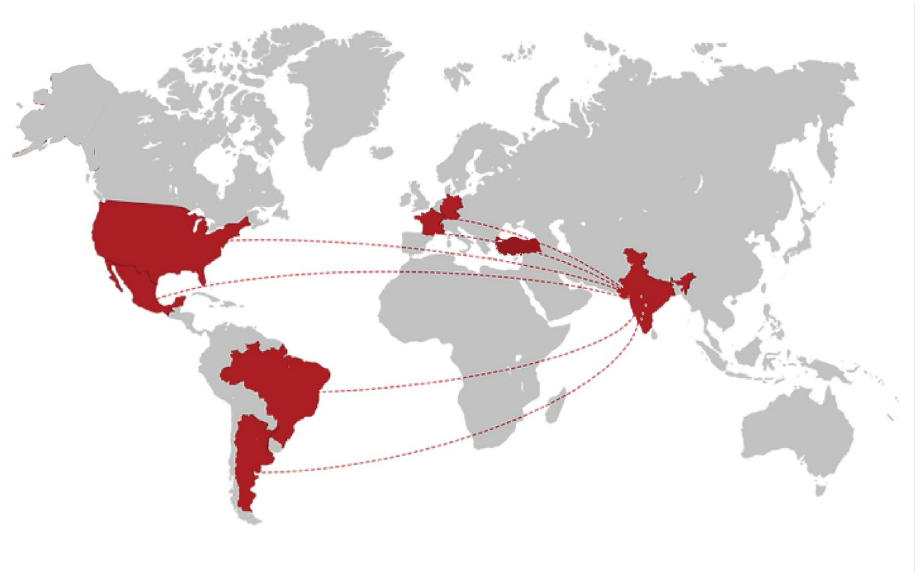
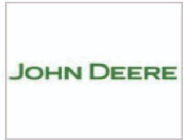
# OUR GROWTH

Sales Million - USD  
Projected FY 24-25





# OUR GLOBAL REACH





## OUR MANUFACTURING FOOTPRINT

We have established 8 plants across the country equipped with the latest technology & infrastructure to meet international quality standards of sheet metal components, critical welded assemblies and dies & fixtures.





# ▶ NASHIK LOCATION - PARTS MANUFACTURING



## Manufacturing Plant 1 - Nashik



75000 Sq.ft.



301



200T - 800T



Dedicated Assembly Line & Paint Shop for Axle Beams



## Manufacturing Plant 2 - Nashik



25000 Sq.ft.



198



80T - 250T



Robotic Welding Facility



# CHAKAN / DEWAS LOCATION - PARTS MANUFACTURING



Dedicated Assembly Lines for  
Housing Rings, Bowl Covers,  
Engine Plates,  
Heavy Fabrication & Machining



50000 Sq.ft.



150

## Manufacturing Plant 2 - Vasuli, Pune



## Manufacturing Plant 3 - Dewas, Madhya Pradesh



27000 Sq.ft.



82



Robotic Welding  
Facility



## Manufacturing Plant 1 - Chakan, Pune



350000 Sq.ft.



402



80T - 1250T



Robotic welding facility & Dedicated  
critical machining setup







# ▶ NASHIK / CHAKAN LOCATION - TOOLS MANUFACTURING



### Development Centre, Nashik



10000 Sq.ft.



143



Machining & Tryout Press



Small dies, Welding fixture, Automation, Rapid proto type building



Dedicated Design Office



### Die Shop, Chakan, Pune



195



CMM, VMCs, Die Spotting & Tryout Press



Casting dies



- a. Dedicated Design Office
- b. Advanced Simulation & Process Feasibility





# CHAKAN LOCATION - DEFENCE & HEAVY FABRICATION



**Manufacturing Plant - Defence, Pune**



25000 Sq.ft.



150



Expertise in specialized  
steel welding



EN15085 / ISO3834 Certification

## Expertise in specialized steel welding

- Carbon steel with grades : SA516.IS2062
- Stainless steel with grades : SS304, SS 316, SS316L
- Special Steel : DMR 249A, Weldox, Strenex, S690QL,17 - 4PH
- Aluminum grades : 6061 T6
- Welding technology expert with IWE (International Welding Engineer) certified
- CSWIP certified experts
- Machining technology expert



# ▶ BUSINESS SEGMENTS



**Automotive**

**Agriculture  
&  
Turf Care**



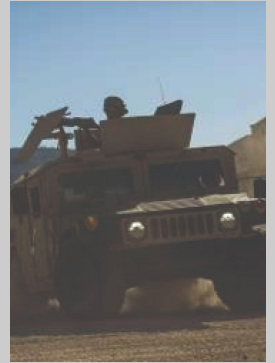
**Commercial  
Vehicles**

**Construction  
Equipment**



**Material  
Handling**

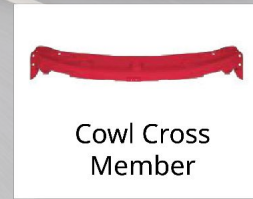
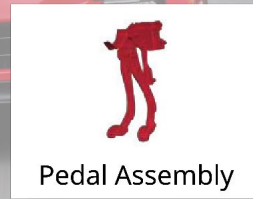
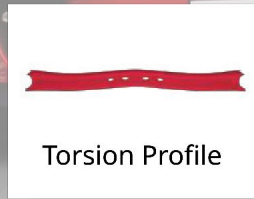
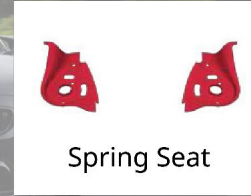
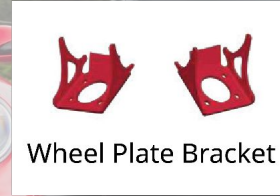
**Defence**



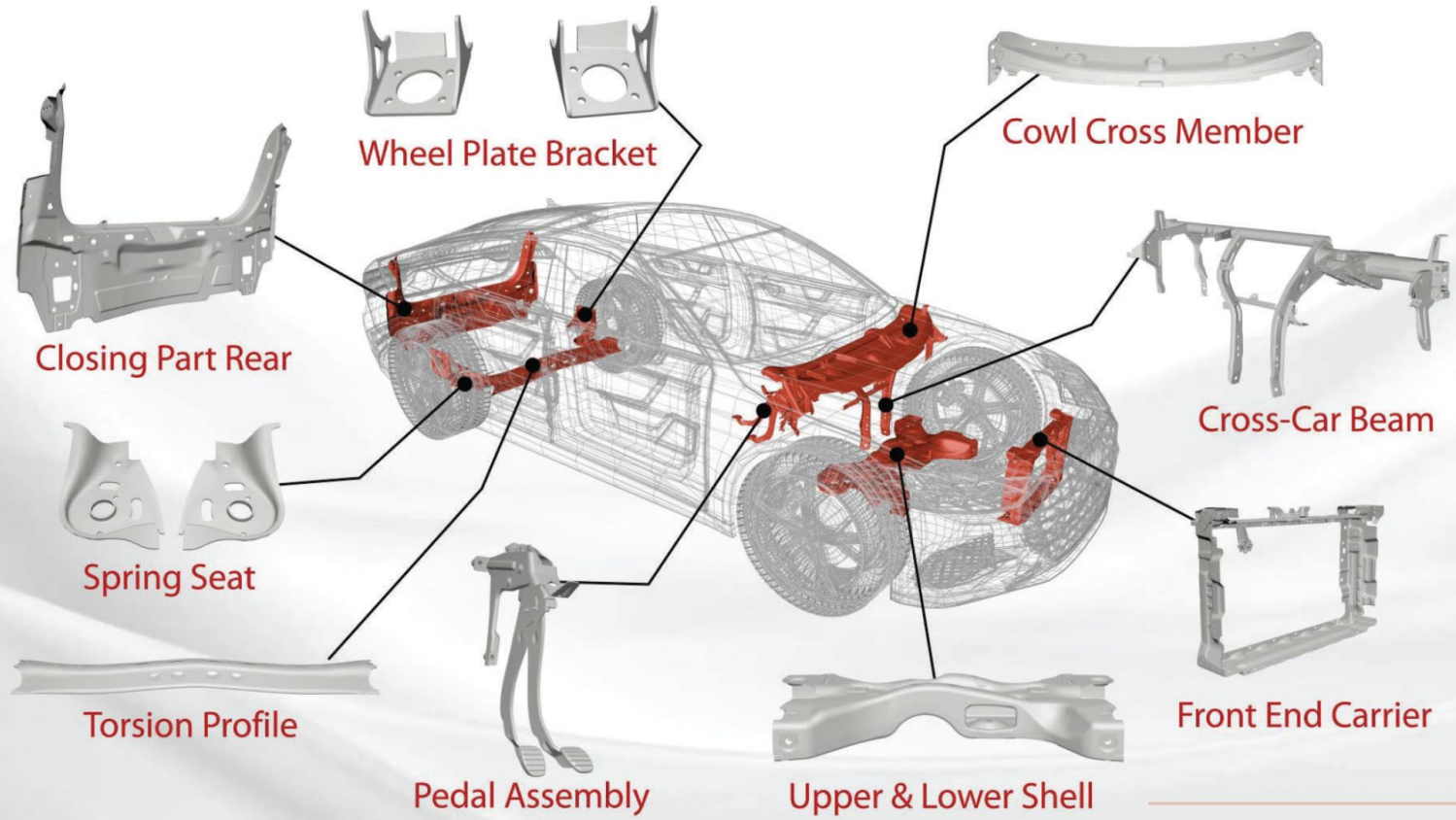


# ▶ PRODUCT PORTFOLIO

## AUTOMOTIVE SEGMENT



# EXPLODED VIEW - AUTOMOBILE



# ▶ PRODUCT PORTFOLIO



## AGRICULTURE & TURF CARE



Beam Axle



Engine Frame



Cowl & Hood  
Assembly



Front Plate



Pedal Assembly



Hitch / Quick  
Coupler

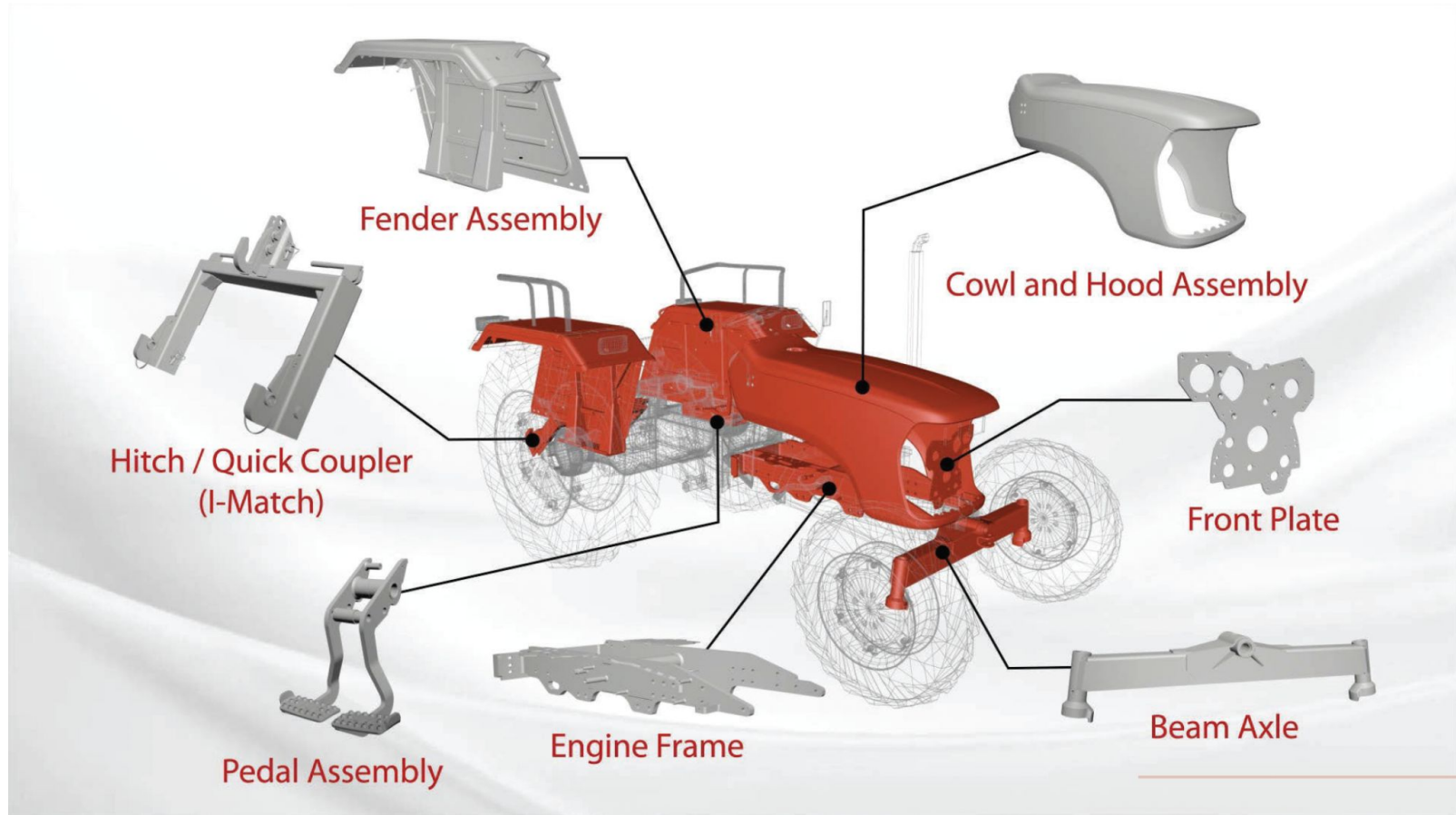


Fender Assembly



Fender

# ▶ EXPLODED VIEW - AGRICULTURE





# ▶ PRODUCT PORTFOLIO

## AGRICULTURE-HARVESTER



Heavy  
Fab Brackets



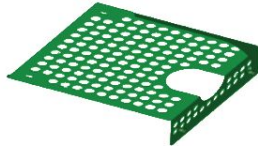
Support  
Float Arms



Wheel Arms



Bracket Size ATD  
Sensor MNTG



ATD Side  
Perforated Panel



Cover Support  
Ladder Side



Assembly,  
Crop Diverter





# ▶ PRODUCT PORTFOLIO

## CONSTRUCTION EQUIPMENTS



Base Plate Rise



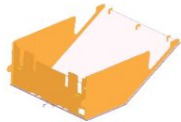
Pedal Assembly



Foot Step



Frame ,  
Bogie Assembly



Tank Guard  
Weldment



Bracket Front  
Light



# ▶ PRODUCT PORTFOLIO

## COMMERCIAL VEHICLES



Bowl Cover



Housing Ring



Cross Member



Support Shock  
Mount



Outrigger Front



# ▶ PRODUCT PORTFOLIO

## MATERIAL HANDLING EQUIPMENTS



Side Panel



Steer Axle Mount  
Bracket



Floor Plate



# ▶ PRODUCT PORTFOLIO

## DEFENCE



Precision Machined Components



Hinge Bracket



Conveyor Cage



Barrel Component



Integrated Mechanical System



## OUR MANUFACTURING FACILITIES



At Reliable, it is our ethos to always embrace new technologies. Our technology is our strength for world-class manufacturing quality.

**Tandem Press Lines  
from 80T to 200T**

**Transfer Press-1250T,  
Progressive press-630T**

**Robotic Welding Lines**

**Sophisticated Machining  
Centers**

**In-house Primer Paint Shop  
& Dedicated Source For  
Surface Coating**



# ▶ OUR MANUFACTURING FACILITIES



**Press Line - Small Tonnage**



**Press Line - High Tonnage**





# OUR MANUFACTURING FACILITIES



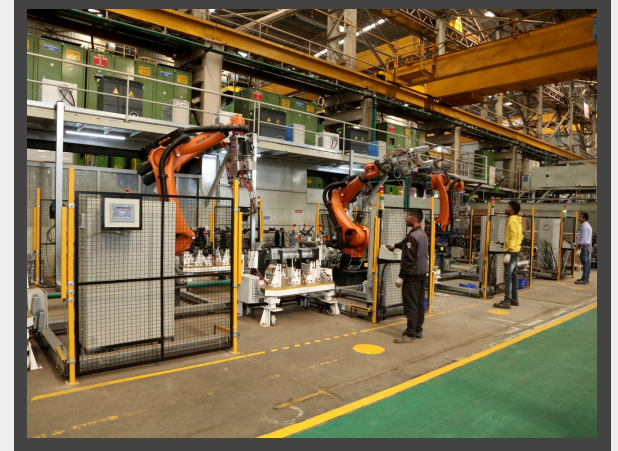
## Laser Machine Specs

**Make :-** Trumpf  
**Machine Power:-** 6KW  
**Sheet size:-** 1500X3000mm  
**Cutting thickness:-** upto 25mm  
**Power Source:-** Fibre Optic  
**Cutting gas provision:-** Oxygen and Nitrogen



## Bending Machine Specs

**Make :-** Trumpf  
**Bending Length :-** 3m max  
**Tonnage Capacity:-** 150T



## Robotic Welding Lines

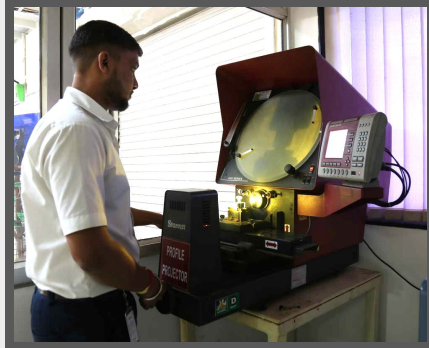
**Make :-** ABB, OTC, KUKA



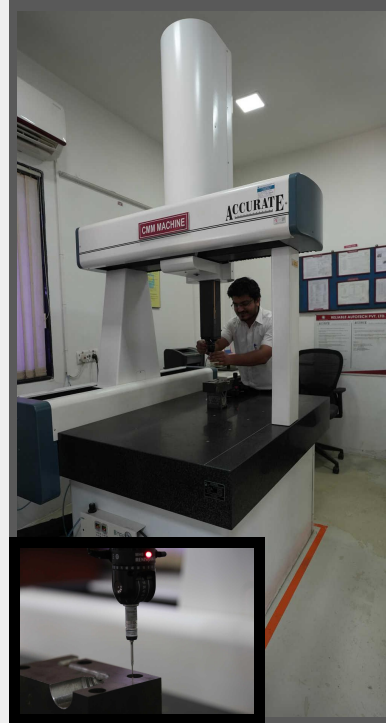
# INSPECTION, MEASUREMENT & TESTING EQUIPMENTS



**Salt Spray Test**



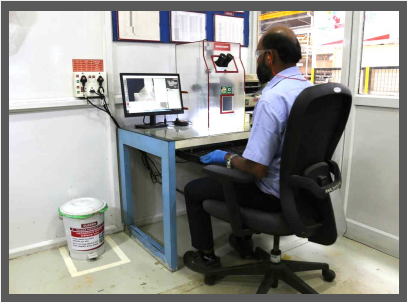
**Profile Projector**



**CMM**



**Engine Plate Testing Setup**



**Microscope**



**Mold & Polishing**



**Laser Engraving  
for Bowl Cover**





# SERVICE QUALITY & CERTIFICATION



**ISO  
9001:2015**

Quality Management  
System



**IATF  
16949:2016**

Quality Management  
System for Automotive  
Sector



**ISO  
14001:2015**

Environment  
Management System



**ISO  
45001:2018**

Occupational Health &  
Safety Management  
Systems



**ISO  
3834:2021**

Quality Requirements  
for Fusion Welding



**EN  
15085:2020**

Welding of Railway Vehicle  
Sand Components  
according EN 15085 - 2020



**ISO / IEC  
27001: 2022**

Certified Information  
Security Management  
System





# OUR STRENGTHS

## Sustainability

Passed Scania (SAQ Platform) & John Deere (Ecovadis Platform)

### Robust System

- Business Excellence
- SAP HANA
- Single Piece Flow
- Cellular Manufacturing
- Practicing TPM, Kanban, Most

### Material

- Monthly Buying of more than 3000 T raw material (1 - 20 mm)
- CR/HR/ Coated and High Strength Material
- Carbon, Alloy & Military grade special steel

### Development Centre

- Speedy Development of Proto Parts & Initial Build Samples
- In-house design and manufacturing of Welding/ Assembly Fixtures

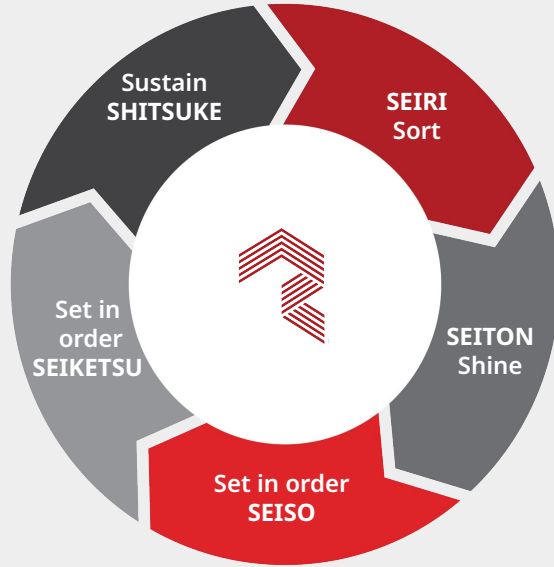
### Tool Room

- State Of The Art Facility
- Dedicated Design team of 40+ Engineers
- Use latest softwares- Catia V5, Siemens Nx, Pro-E, Inventor, Think3, Hyper Mesh, LS-Dyna and Radios

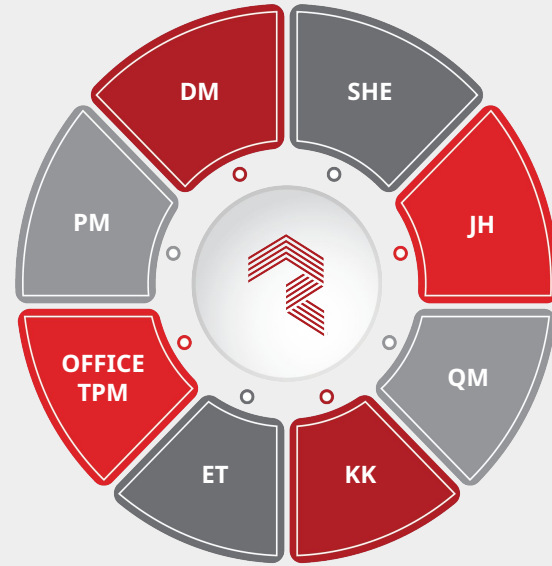




# BUSINESS EXCELLENCE



5S



Total Productive Maintenance



## SUPPLY CHAIN & WAREHOUSING

▶ **Robust system** to manage the entire supply chain

▶ Shipping **400+ containers** per year

▶ Warehouses located across the globe at  
**USA (South Carolina & IOWA)**  
**Europe (France)**





# EMPLOYEE ENGAGEMENT & TRAINING PROGRAMS





## SOCIAL RESPONSIBILITY

### CSR Initiatives

- Partnering with NGOs & Institutions working in the field of Healthcare, Child Education, Social Security, Environment, Road Safety & Cleanliness.
- 100% Transparency & Compliance related to CSR contributions.
- Aim to formalize CSR Strategy with monitoring & impact assessment by 2025.
- Active Employee participation & volunteerism in a local NGO working for differently abled women.



## SUSTAINABILITY

- Published First Annual Sustainability Report for FY 21-22 based on GRI Standards. (Available on [www.reliableautotech.com/investors](http://www.reliableautotech.com/investors)).
- Action plan & strategy in place to reduce carbon footprint in the supply chain.
- Monthly Monitoring & Review of Annual Sustainability Goals
- ~700 Kw Rooftop Solar installed.
- Plan to achieve 100% Green energy for all Plants by 2025.





# SUSTAINABILITY HIGHLIGHTS



## People



No. of hours of functional & general training to staff – **29** hrs per employee



No. of NGOs to with whom we partner - **10**



**Zero** major accidents/ fatalities status

## Planet



No. of trees planted & sustained till date – **842**



Energy saving - **200000** KWH by process efficiency and improvements



**Zero** Hazardous waste to landfill

## Prosperity



Electricity generated from solar in **FY 22-23** in Kwh – **11%**



Electricity generated from solar in **FY 22-23** in GJ – **1843**



CSR contribution for **FY 22-23** – INR **3.1** million





# SUSTAINABILITY HIGHLIGHTS



Reliable has been an early adopter of Corporate Social Responsibility initiatives. Reliable is dedicated to protecting human health, natural resources and the global environment. Our CSR initiatives are aimed at giving back to our stakeholders at large by supporting worthy causes through financial assistance and employee volunteerism. Our CSR Team and a few staff members visit a welfare institution for mentally challenged/ differently abled women every month to personally delivery groceries & supplies. We also encourage a couple of new staff members every month to accompany the CSR Team. This helps the staff members to nurture a sense of purpose & responsibility towards the society.

We focus on supporting Organisations who work for the following causes: Healthcare, Child Education, Social Security, Environment, Road Safety and Cleanliness. 100 % Transparency  
100 % Compliance To know more about our various CSR & volunteering initiatives, please visit <https://www.reliableautotech.com/csr>.  
Our commitment towards environmental & societal welfare is unwavering and we firmly believe in creating a long-term positive impact. We intend to maximize the impact of our contributions under Corporate Social Responsibility by adopting a structured approach & strategy:



## REWARDS & RECOGNITION

- Development Centres certified as R&D centres by Department of Scientific & Industrial Research, Government of India.
- Silver medal for National award manufacturing competitiveness (NAMC) by International research institute for manufacturing ( IRIM ).
- 18th Edition CII Western Region SHE Excellence & Innovation Awards 2023.
- Special recognition by TATA Steel.
- 1st Prize in HR Best Practices by Vibrant HR.
- National Convention on Quality Concepts “NCQC 2024” at Nagpur award.
- Award from 23rd QCFI Annual Chapter Convention on Quality Concepts “CCQC 2023” by Quality Circle Forum of Indian award.
- 2 Star Export House Status Holder.



# RELIABLE LEADERSHIP TEAM



we are.



RELIABLE

we are.

**Thank You!**

**Connect with us:**

[mktg@reliableautotech.com](mailto:mktg@reliableautotech.com)

**Website Link:**

<https://www.reliableautotech.com/>

**LinkedIn:**



[www.ReliableAutotech.com](http://www.ReliableAutotech.com)